



Salinas

DESIGNED BY GENILSON LIMA SANTOS

BRASIL
2016

Salinas

ABOUT THIS TYPEFACE

Salinas is an elegant high contrast serif font. It was designed for use in display sizes. Consists of 10 font files, giving it flexibility for display need. It is perfect for headings, logos, wedding invitation, t-shirt, letterhead, news, posters, magazines etc. It has a complete latin character set, ligatures, swashes, initial and terminal forms, accented glyphs and OpenType features. Each font contains 480+ glyphs, supporting more than 200 languages.



Salinas

Salinas Thin

Salinas ExtraLight

Salinas Light

Salinas Regular

Salinas SemiBold

Salinas Bold

Salinas Black

Salinas Italic

Salinas Stencil

salinas unicase

UPPERCASE

A Á Â Ã Ä Å Æ Ç È É Ê Ë
 L Ł Œ Ñ Ò Ó Ô Õ Ö Ø Ù Ú
 Û Ü Ý Þ ß à á â ã ä å æ ç
 è é ê ë ì í î ï ð ñ ò ó
 ô õ ö ø ù ú û ü ý þ ß

LOWERCASE

a á â ã ä å æ ç è é ê ë ì
 í î ï ð ñ ò ó ô õ ö ø ù
 ú û ü ý þ ß

PUNCTUATION, SYMBOLS & ORNAMENTS

! " # \$ % & ' () * + , - . / : ;
 @ [\] ^ _ { | } ~ ¨ © ® ¯
 ° ± × ÷ ∂ ∅ ∏ ∑ ∞ ∫ ≈ ≠ ≤ ≥
 № € £ ¥ ¢ ¤ ¥ ¤ € £ € ¤
 ∞ ∞ ∞ ∞ ∞ ∞ ∞ ∞ ∞ ∞ ∞
 ∞ ∞ ∞ ∞ ∞ ∞ ∞ ∞ ∞ ∞ ∞
 ∞ ∞ ∞ ∞ ∞ ∞ ∞ ∞ ∞ ∞ ∞
 ∞ ∞ ∞ ∞ ∞ ∞ ∞ ∞ ∞ ∞ ∞

NUMERALS

0 1 2 3 4 5 6 7 8 9 ¹²³ _{1/4} ¹/₂ ³/₄

UPPERCASE

A Á Â Ã Ä Å Æ Æ B C Č Ć Ĉ Ċ D Đ Ď Ę
 E É Ě Ě Ê Ë È Ē Ė Ě F G Ğ Ğ Ġ Ģ Ĥ Ħ Ĩ Ĵ Ķ Ĵ
 K Ķ L Ĺ Ļ Ľ Ľ M N Ń Ņ Ņ Ñ Ñ Ñ Ñ Ñ Ñ Ñ Ñ
 Ñ Ñ Ñ Ñ Ñ Ñ Ñ Ñ Ñ Ñ Ñ Ñ Ñ Ñ Ñ Ñ Ñ
 Ñ Ñ Ñ Ñ Ñ Ñ Ñ Ñ Ñ Ñ Ñ Ñ Ñ Ñ Ñ Ñ Ñ
 Ñ Ñ Ñ Ñ Ñ Ñ Ñ Ñ Ñ Ñ Ñ Ñ Ñ Ñ Ñ Ñ Ñ

LOWERCASE

a á â ã ä å æ æ b c č ċ ĉ ċ d đ ď ě
 f g ğ ğ ġ ģ ĥ ħ ĩ ĵ ĵ ĵ ĵ ĵ ĵ ĵ ĵ
 o ó ô õ ö ò ó ø ñ ñ ñ ñ ñ ñ ñ ñ
 ñ ñ ñ ñ ñ ñ ñ ñ ñ ñ ñ ñ ñ ñ ñ ñ ñ

PUNCTUATION, SYMBOLS & ORNAMENTS

! " # \$ % & ' () * , - . / : ; ?
 @ [\] ^ _ { | } ~ ¨ « » „ … © ® ™ ¶ § +
 < = > | | ~ ¬ ± × ÷ ∂ ∅ ∏ ∑ − ∕ ∙ √ ∞ ∫ ≈ ≠
 ≤ ≥ ° e ℓ ∠ Δ Ω μ π σ \$ ¢ £ ¤ ¥ ¤ F £ €
 ß ∞ ∞ ∞ ∞ ∞ ∞ ∞ ∞ ∞ ∞ ∞ ∞ ∞ ∞ ∞ ∞
 ∞ ∞ ∞ ∞ ∞ ∞ ∞ ∞ ∞ ∞ ∞ ∞ ∞ ∞ ∞ ∞
 ∞ ∞ ∞ ∞ ∞ ∞ ∞ ∞ ∞ ∞ ∞ ∞ ∞ ∞ ∞ ∞
 ∞ ∞ ∞ ∞ ∞ ∞ ∞ ∞ ∞ ∞ ∞ ∞ ∞ ∞ ∞ ∞

NUMERALS

0 0 1 2 3 4 5 6 7 8 9 ¹²³ ¹/₄ ¹/₂ ³/₄

UPPERCASE

[illegible]

LOWERCASE

aáâãäåàāąăãææbcćčċcđďdēéěêëèēęẽ
fgğġgĝĥĥîïĩîijījĵkķlł'ľłłmnnńņŋñ
oóôõöòóōøőœpḑqṛrṛrsśšşșßtţţtuúûüù
ùúūuũvẀẁẂẃẄẅẆẇẈẉxȳýÿỲỴỶỷzžžžčńóśź

PUNCTUATION, SYMBOLS & ORNAMENTS

[illegible]

NUMERALS

$$00123456789^{1231/4}1/2^{3/4}$$

UPPERCASE

A Á Â Ã Ä Å Æ Æ B C Č Ć Ç Ĉ Ċ D Đ Ď Ę
 E É Ê Ë Ì Í Î Ï Ñ Ñ Ñ Ñ Ñ Ñ Ñ Ñ Ñ Ñ Ñ Ñ Ñ
 K Ķ Ĺ Ļ Ľ Ľ Ľ Ľ Ľ Ľ Ľ Ľ Ľ Ľ Ľ Ľ Ľ Ľ Ľ
 Œ Œ P P Q R R R S S S S S S S S S S S S S S S S S
 T T T T T T U U U U U U Ü Ü Ü Ü Ü Ü Ü Ü Ü Ü Ü Ü
 Ü

LOWERCASE

a á â ã ä å æ æ b c č ċ ç ĉ ċ d đ ď ě
 f g ĝ ħ ĩ ĵ ĵ ĵ ĵ ĵ ĵ ĵ ĵ ĵ ĵ ĵ ĵ ĵ ĵ ĵ
 o ó ô õ ö ò ò ø ò œ p q r r r s s s s s s s s s s s
 t t t t t t u u u u u u ü ü ü ü ü ü ü ü ü ü ü ü

PUNCTUATION, SYMBOLS & ORNAMENTS

! " # % & & & & ' () * , - - — . / : ; ?
 @ [] \ _ { } † ‡ ‹ ‹ ‹ ‹ ‹ ‹ ‹ ‹ ‹ ‹ ‹ ‹ ‹ ‹ ‹ ‹
 < = > | | ~ ~ ~ ~ ~ ~ ~ ~ ~ ~ ~ ~ ~ ~ ~ ~ ~ ~
 ≤ ≥ N° e ℓ ◇ Δ Ω μ π σ \$ ¢ £ ¤ ¥ ¤ F £ €
 ß ∞
 ∞
 ∞
 ∞

NUMERALS

0 0 1 2 3 4 5 6 7 8 9 ¹²³ ¹/₄ ¹/₂ ³/₄

UPPERCASE

A Á Â Ã Ä Å Æ Ç È É Ê Ë
 F G Ģ Ĥ Ħ I J K L Ł Œ
 M N Ń Ņ Ñ O Ó Ô Õ Ö Ø
 Ù Ú Û Ü Ý Þ ß à á â ã
 ä å æ ç è é ê ë ì í î ï

LOWERCASE

aáăâäàāąǎãææbcčćĉcđdďdeéěêëèēęē
fgğġgĝghĥhiũĩñîijïjĵkķĺł'ľłłmnnńņŋñ
oóőôöòóōøóõœpþqrrŕrsśšşßtttʈtuúûü
ûüùúūųűũvwŵwŭwwxyýÿÿzzžžćńóśź

PUNCTUATION, SYMBOLS & ORNAMENTS

[illegible]

NUMERALS

00123456789¹²³^{1/4}^{1/2}^{3/4}

UPPERCASE

A Á Â Ã Ä Å Æ Ç È É Ê Ë
L Í Î Ï Ñ Ò Ó Ô Õ Ö Ø
Š Ÿ ß à á â ã

LOWERCASE

**aáãâäàāąǎãææbcćčċĉcdòd'deéěêëèēēę
 fgğġĝġĥhĥiĩĩĩijīījĵjĵkķlĺl'łłłmnnńņņñ
 oóőôöòóōøóõœpþqrrŕŕsśśŝŝſtţttţtuúű
 ůûüùúūųůũvwŵŵwŵxyýÿÿÿzẏẏẏźćńóśŹ**

PUNCTUATION, SYMBOLS & ORNAMENTS

[illegible]

NUMERALS

00123456789¹²³ $\frac{1}{4}$ $\frac{1}{2}$ $\frac{3}{4}$

UPPERCASE

AĂÂÃÄÅĀĄǺÆȦĆČÇĈĊĐÐĎ
EÉĚĔÊËÈĒĖĜĞĠĢĤİĨÎĴĵŶ
KŁLŁŁŁLMNŃÑŇŅŊOÓÕÖÔŮŐØ
ŌŬœPpQqRrŘřSśŜŝŞßTtŦțȚȚUúŨû
ÜüÚūȪǓǕǗǘǙǚǞǟǠǡǣǥǧǩǫ

LOWERCASE

**aáăâäåãæȧbcćčĉêċdðd'deéěēëèēę
fgğǵḡghĥhiũĩñijïj̃jkķĺł'ľłmnnńņŋñ
oóõôöòóōøóõœpþqrr̄ṙrsśšşŝßttt̃tṭtuúů
űûüùúūuųũvwŵw̆ẅẘxyýÿÿzẏzzžčćńóśż**

PUNCTUATION, SYMBOLS & ORNAMENTS

[illegible]

NUMERALS

00123456789¹²³¼½¾

UPPERCASE

[illegible]

LOWERCASE

*aáăâäàāąǎãæébcćčçĉcdđd'ðeéeěêëèēęē
fgğġĝĥhhîïĩüũijÿjĵkķĺł!łłmnńňņŋñ
oóőõôöòóōøóõœpþqrrŕŗssśşßtttţtuúûűû
ùùúūųůũvwẀwẁẂẃẄxȳýÿỲỳzzžžčńóšż*

PUNCTUATION, SYMBOLS & ORNAMENTS

[illegible]

NUMERALS

00123456789¹²³_{1/4 1/2 3/4}

UPPERCASE

A Á Â Ã Ä Å Æ Ç È É Ê Ë Ì Í Î Ï Ñ Ò Ó Ô Õ Ö Ø Ù
 Ú Û Ü Ý Þ ß à á â ã ä å æ ç è é ê ë ì í î ï ñ
 ò ó ô õ ö ø ù ú û ü ý þ ß à á â ã ä å æ ç è é ê ë ì
 í î ï ñ ò ó ô õ ö ø ù ú û ü ý þ ß à á â ã ä å æ ç è é

LOWERCASE

a á â ã ä å æ ç è é ê ë ì í î ï ñ ò ó ô õ ö ø ù
 ú û ü ý þ ß à á â ã ä å æ ç è é ê ë ì í î ï ñ
 ò ó ô õ ö ø ù ú û ü ý þ ß à á â ã ä å æ ç è é

PUNCTUATION, SYMBOLS & ORNAMENTS

! " # \$ % & ' () * + , - . / : ;
 ? @ [\] ^ _ { | } ~ ¡ ¢ £ ¤ ¥ ¦ § ¨
 © ª « ¬ ® ¯ ° ± ² ³ ´ µ ¶ · ¸ ¹ º » ¼ ½ ¾
 ¿ Æ Ç È É Ê Ë Ì Í Î Ï Ñ Ò Ó Ô Õ Ö Ø Ù
 Ú Û Ü Ý Þ ß à á â ã ä å æ ç è é ê ë ì
 í î ï ñ ò ó ô õ ö ø ù ú û ü ý þ ß à á â ã ä å æ ç è é

NUMERALS

0 1 2 3 4 5 6 7 8 9 ¹/₂ ³/₄

Standard ligatures

*Not available in unicasé style.

REGULAR

fi ffi fl ffl fb ffb ff fh fk www

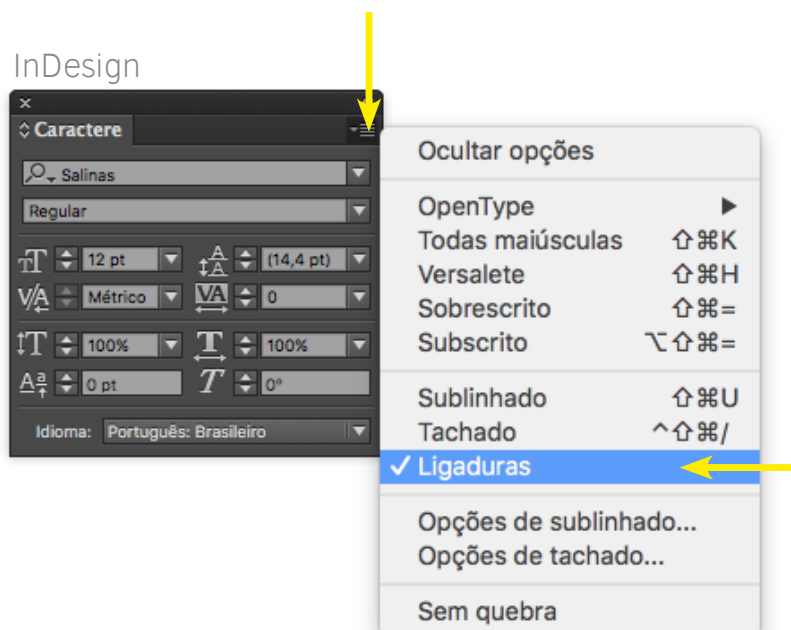
STENCIL

fi ffi fl ffl fb ffb ff fh fk www

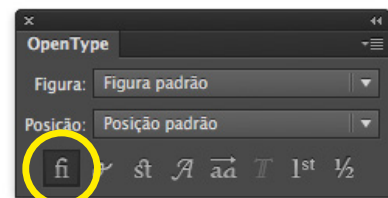
ITALIC

fi ffi fl ffl fb ffb ff fh fk www

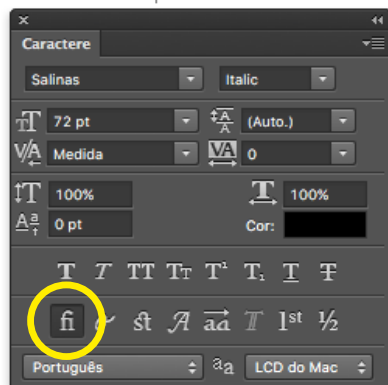
InDesign



Illustrator



Photoshop



Discretionary ligatures

*Not available in unicasé style.

REGULAR

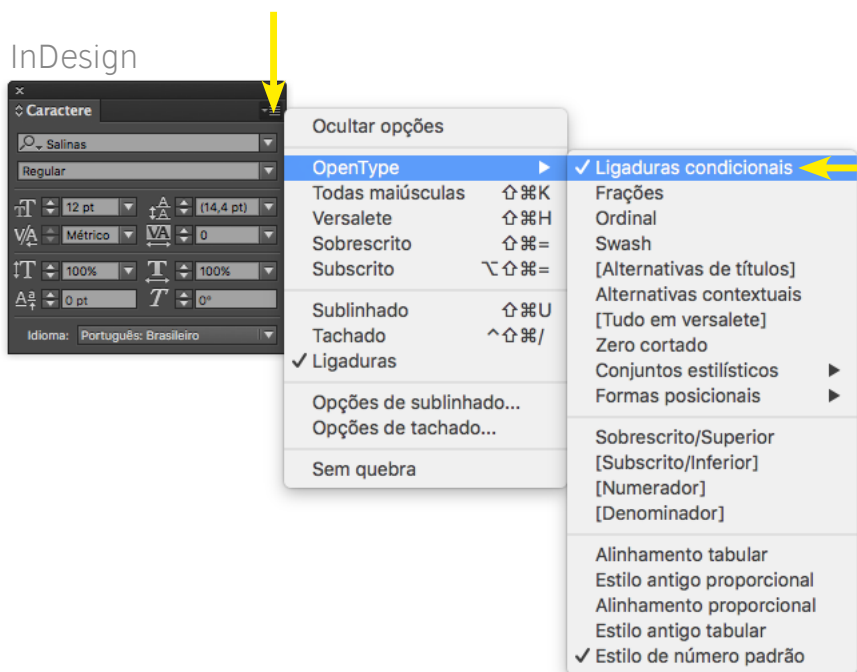
fj ffj fr ffr ft fy in ip it ch ct nh sh sk sp st tt
 AA A' AV CO IB HD HE HK IA IL LO NH OC
 OO OQ UR

STENCIL

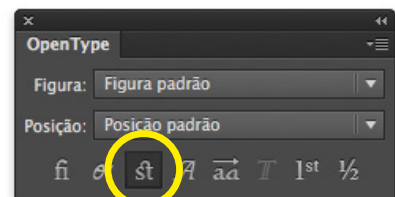
Th fj ffj fr ffr ft fy in ip it ch ct nh sh sk sp st tt
 AA A' AV OO IB HD HK LA IL LO NH OC OO OQ

ITALIC

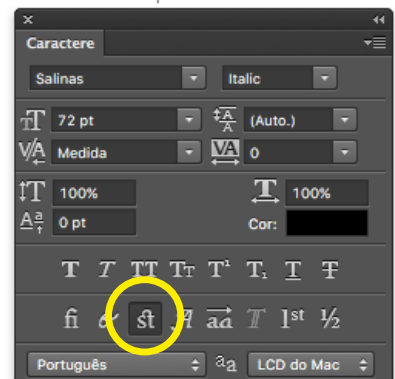
*Th fj ffj fr ffr ft fy in ip it ch ct nh sh sk sp st tt
 AA A' AV OO IB HD HK LA IL LO NH OC OO OQ*



Illustrator



Photoshop



Alternative glyphs

& – & & &

SS01 SS02 SS03

7 – 7

SS04

g – g

SS05

*Not available in uncase style.

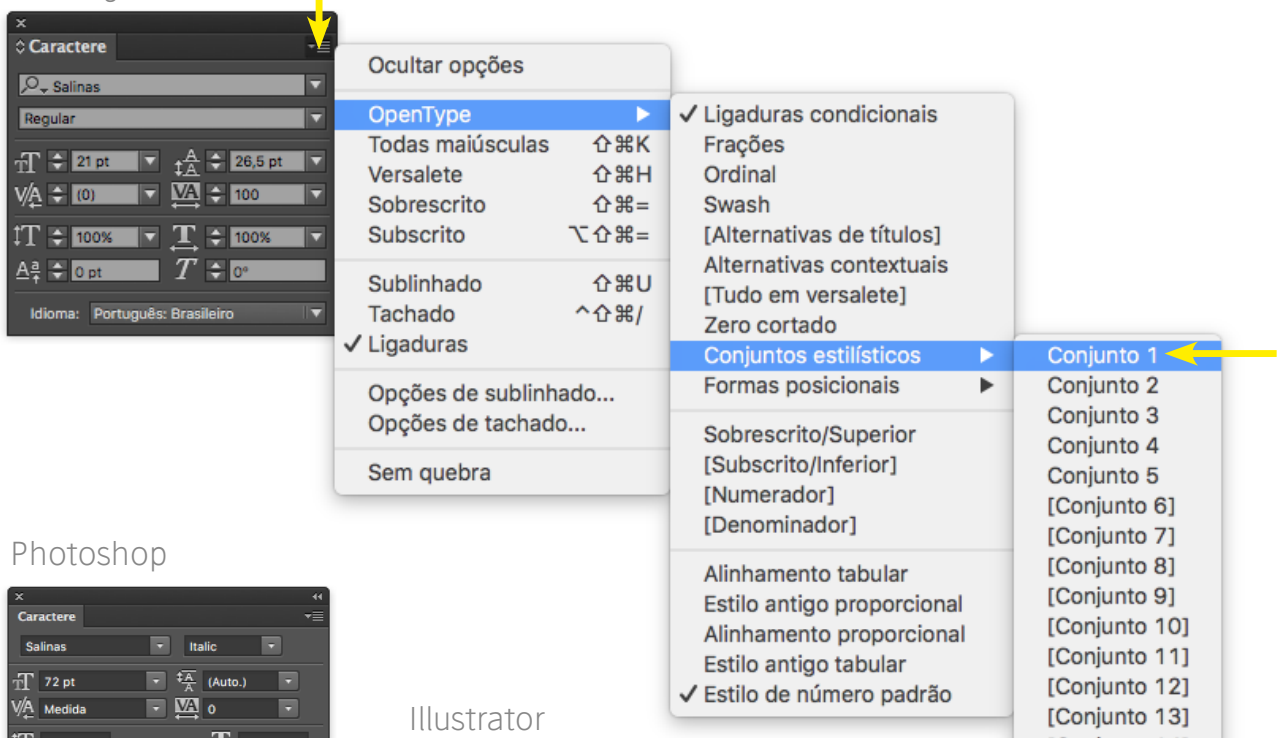
Affects lowercase g and their accents.

**Available only in italic style.

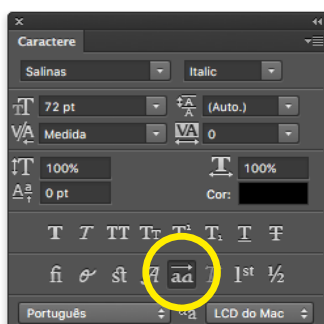
Slashed zero

0 – 0

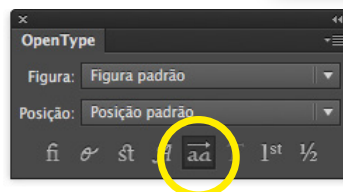
InDesign



Photoshop



Illustrator

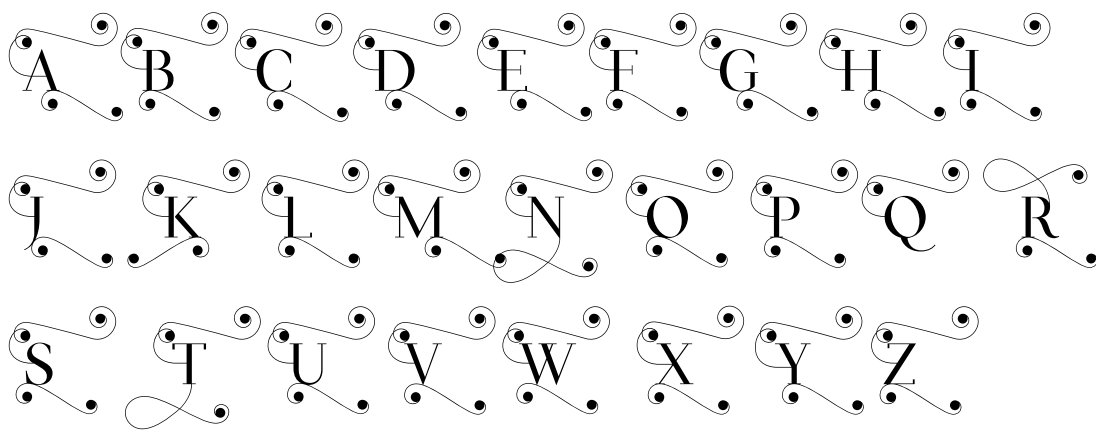


Swash

INITIAL FORMS

Affects capital A, B, C, D, E, F, G, H, I, J, K, L, M, N, O, P, Q, R, S, T, U, V, W, X, Y, Z, and their accents.

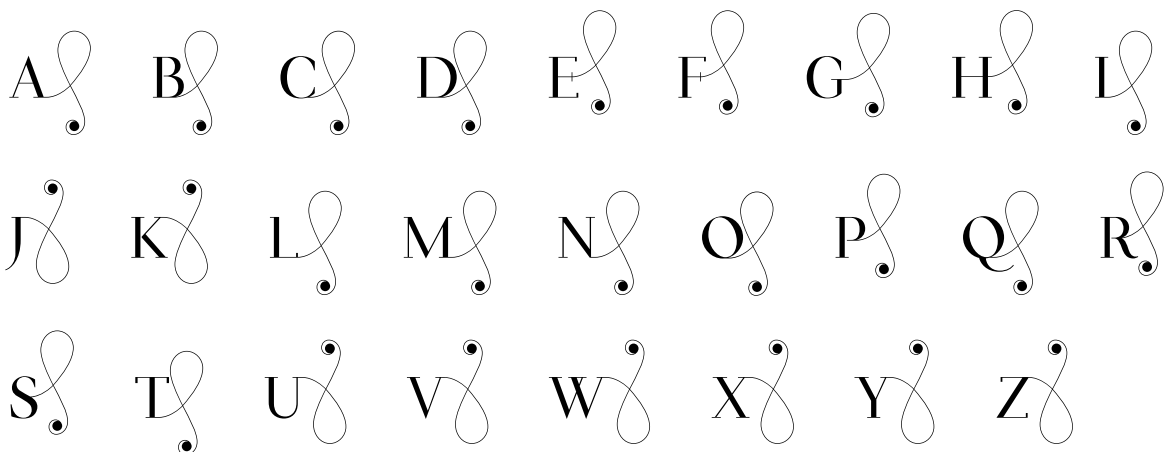
*Not available in uncase and italic styles.



TERMINAL FORMS

Affects capital A, B, C, D, E, F, G, H, I, J, K, L, M, N, O, P, Q, R, S, T, U, V, W, X, Y, Z, and their accents.

*Not available in uncase and italic styles.



Swash

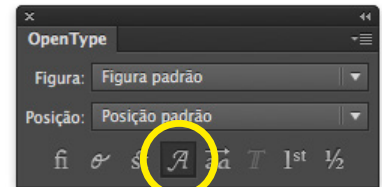
INICIAL & TERMINAL FORMS

ÄLMHULT

When We

GET HOME

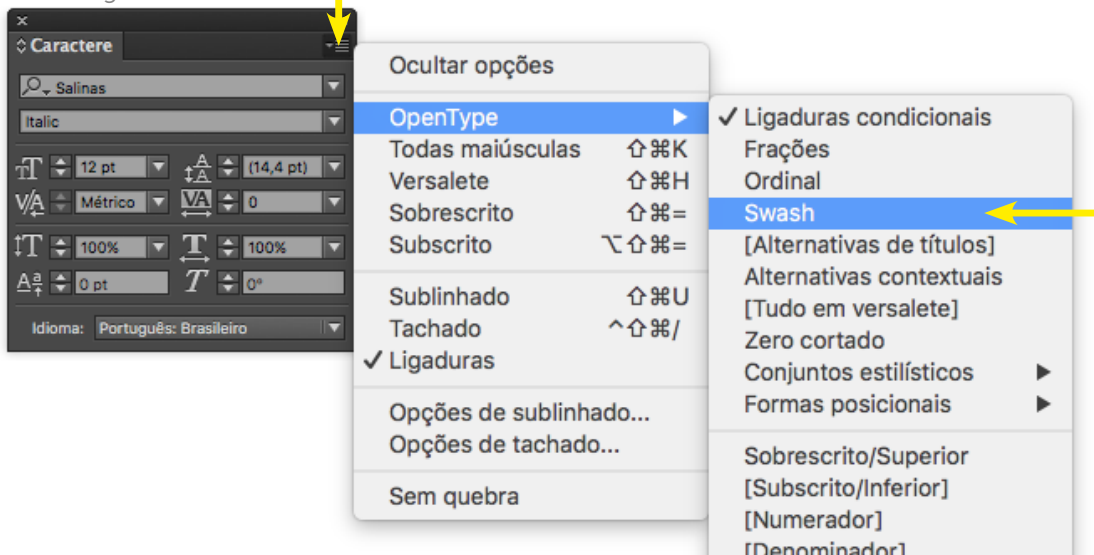
Illustrator



Photoshop



InDesign

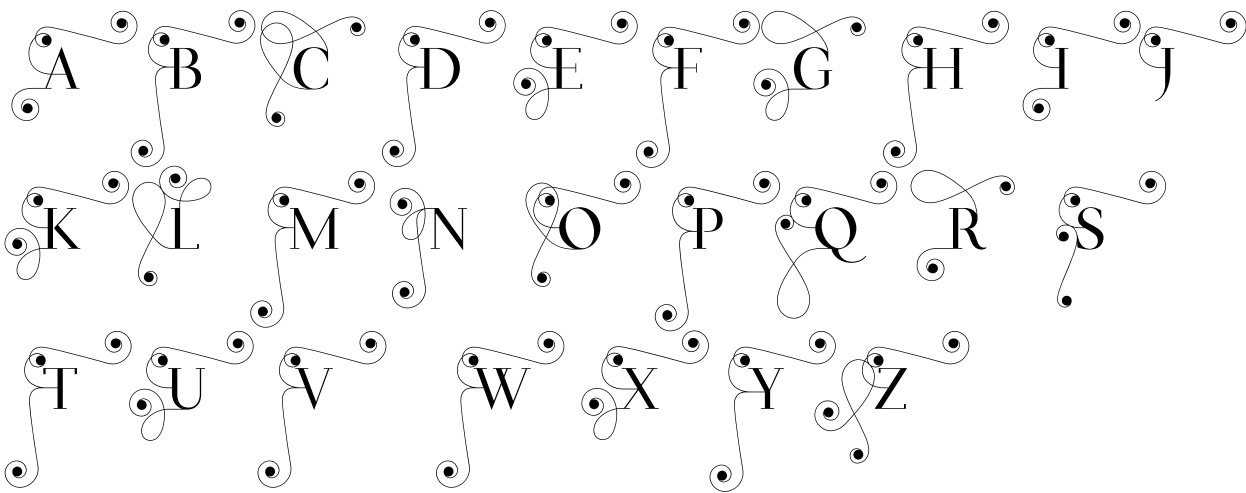


Swash

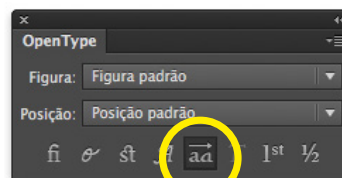
INITIAL CAPITALS (SS05)

Affects capital A, B, C, D, E, F, G, H, I, J, K, L, M, N, O, P, Q, R, S, T, U, V, W, X, Y, Z, and their accents.

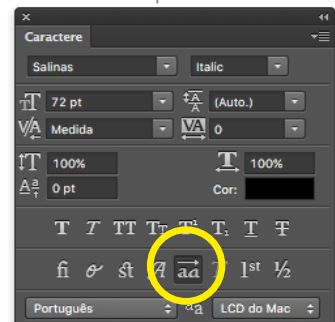
*Not available in uncase and italic styles.



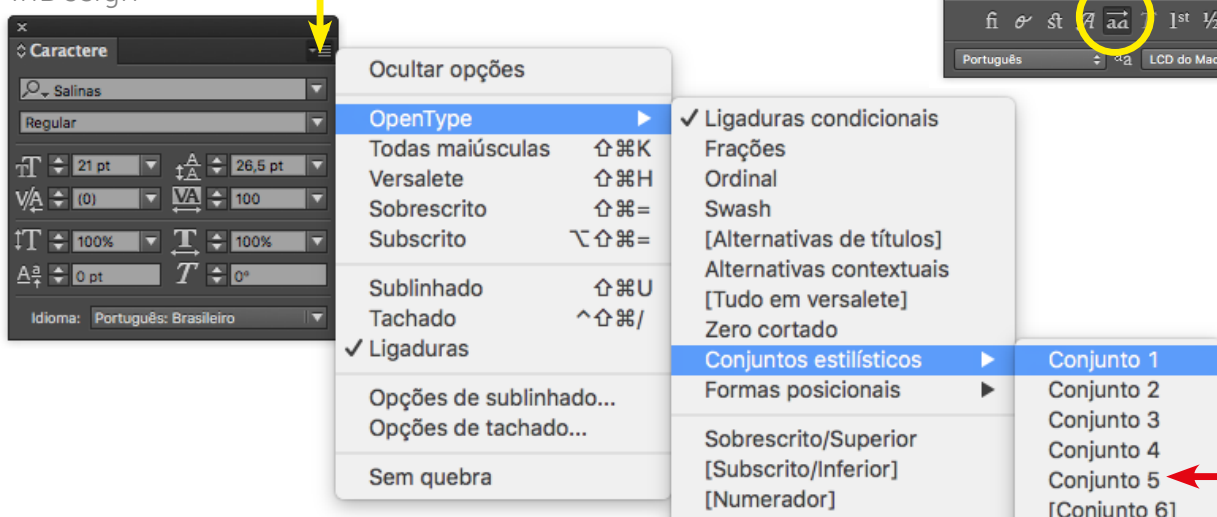
Illustrator



Photoshop



InDesign



Swash

INITIAL CAPITALS

My dear fellow," said Holmes, as we sat by the fire in the room at Baker Street, "it is infinitely stranger than anything which the mind of man could invent. I cannot begin to conjecture what it really is, but the thing is, nevertheless, really there. It is the commonplaces of everyday life, if you will. If we could fly out of that window in hand, and hover over this great city, remove the roofs, and peep in at the queer things which are going on, at the strange coincidences, the plots,

nce upon a
a richman
called to h
daughter.

“Dear child,” she said, “live. Be always good and kind, and I will help you in all your troubles.”
Soon after this she died, and her daughter went to her grave.
Winter came, and the ground was covered with snow. But when the spring sunshine made it green again, the flowers came out, and the children were very happy.

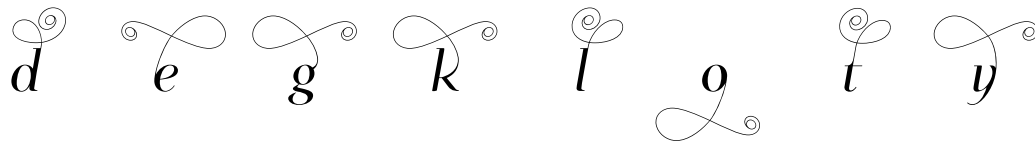
Era a primeira vez que as duas iam ao Morro do Castelo. Começaram de subir pelo lado da Rua do Carmo. Muita gente há no Rio de Janeiro que nunca lá foi, muita haverá morrido, muita mais nascerá e morrerá sem lá pôr os pés. Nem todos podem dizer que conhecem uma cidade inteira. Um velho inglês que aliás andara terras e terras, confiava-me há muito

Swash

SWASHES

Affects lowercase italic style d, e, g, k, l, o, t, y, and their accents.

*Available only in italic style.



*Jack and
the Bean
Stalk*

Localized characters

Turkish

Diyarbakır DİYARBAKIR

Polish

Żródliskach

Catalan

Novella

Dutch

Bíjna

Romanian

Conștiință

Languages supported

Abenaki, Afaan Oromo, Afar, Afrikaans, Albanian, Alsatian, Amis, Anutan, Apache, Aragonese, Aranese, Aromanian, Arrernte, Arvanitic (Latin), Asturian, Atayal, Aymara, Bashkir (Latin), Basque, Bemba, Bikol, Bislama, Bosnian (Latin), Breton, Catalan, Cebuano, Chamorro, Chavacano, Cimbrian, Chichewa, Chickasaw, Cofán, Corsican, Cape Verdean Creole, Creek, Crimean Tatar (Latin), Croatian (Latin), Czech, Dawan, Delaware, Dholuo, Drehu, Dutch, English, Estonian, Faroese, Fijian, Filipino, Finnish, Folkspraak, French, Frisian, Gagauz (Latin), Galician, Ganda, Genoese, German, Gooniyandi, Guadeloupean Creole, Gwich'in, Haitian Creole, Hän, Hawaiian, Hiligaynon, Hopi, Hotçak (Latin), Hungarian, Ido, Ilocano (Latin), Indonesian, Interglossa, Interlingua, Irish, Istro-Romanian, Italian, Jamaican, Javanese (Latin), Jèrriais, Kala Lagaw Ya, Kapampangan (Latin), Kaqchikel, Karakalpak (Latin), Kashubian, Kikongo, Kinyarwanda, Kiribati, Kirundi, Ladin, Latin, Latino sine Flexione, Latvian, Lithuanian, Lojban, Lombard, Low Saxon, Luxembourgish, Maasai, Makhuwa, Malay (Latin), Maltese, Manx, Māori, Marquesan, Megleno-Romanian, Meriam Mir, Mirandese, Mohawk, Moldovan, Montagnais, Montenegrin, Murrinh-Patha, Nagamese Creole, Ndebele, Neapolitan, Ngayambaa, Niuean, Noongar, Norwegian, Novial, Occidental, OshiWambo, Ossetian (Latin), Palauan, Papiamentu, Piedmontese, Polish, Portuguese, Potawatomi, Q'eqchi', Quechua, Rarotongan, Rotokas, Romanian, Rotuman, Sami (Inari Sami), Sami (Lule Sami), Sami (Northern Sami), Sami (Southern Sami), Samoan, Sango, Saramaccan, Sardinian, Scottish Gaelic, Serbian (Latin), Seri, Seychellois Creole, Shawnee, Shona, Sicilian, Silesian, Slovak, Slovenian, Slovio (Latin), Somali, Sorbian (Lower Sorbian), Sorbian (Upper Sorbian), Sotho (Northern), Sotho (Southern), Spanish, Sranan, Sundanese (Latin), Swahili, Swazi, Swedish, Tahitian, Tetum, Tok Pisin, Tokelauan, Tongan, Tshiluba, Tsonga, Tswana, Tumbuka, Turkish, Turkmen (Latin), Tuvaluan, Tzotzil, Uzbek (Latin), Venetian, Vepsian, Volapük, Võro, Wallisian, Walloon, Warlpiri, Waray-Waray, Wayuu, Welsh, Wik-Mungkan, Wiradjuri, Wolof, Xavante, Xhosa, Yapese, Yindjibarndi, Zapotec, Zazaki, Zulu, Zuni

Salinas

DESIGNED BY GENILSON LIMA SANTOS

creativemarket.com/GenilsonSantos

www.behance.net/Genilson

genilson.blacktype@gmail.com

Copyright © 2016 by
Genilson Lima Santos.
All rights reserved.