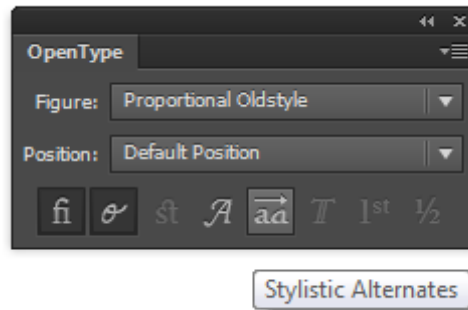




How to?

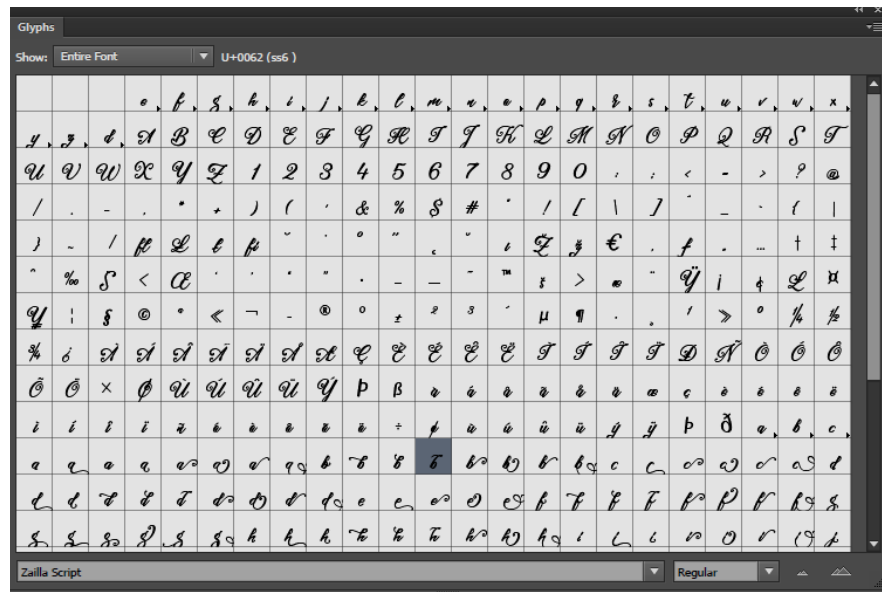
Access OpenType features in Adobe Illustrator and Adobe InDesign

Go to Window > Type > OpenType (Alt+Shift+Ctrl+T). In the OpenType panel, simply click on the button to activate the OpenType feature that you like.



Access all alternate characters in Adobe Illustrator and Adobe InDesign

Go to Window > Type > Glyphs . The default on the 'Show' dropdown list bar should be 'Entire Font', you can change it to every features that you like. You can also select a character on the font and then change the Show list to 'Alternates for Current Selection' to access alternate characters that available for that character.



That's it!

Feel free to let me know if you need any extra help,
always happy to assist!

contact support : hendramaulia@gmail.com

Video Tutorial

Access Beautiful character set :

<https://youtu.be/dPl1y6ICBzA>

To Access Alternate Characters Click The Link Below:

by using Windows Character Map with Adobe Photoshop (PS)

<https://www.youtube.com/watch?v=BScPsiubM1k>

by using Adobe Illustrator (AI)

<https://www.youtube.com/watch?v=y5XTaWYwWA4>

Tutorial

<https://fontbundles.net/tutorials>